

Royal Turnier



Oil Pattern Distance:	40 Feet	Reverse Brush Drop:	40 Feet	Oil Per Board:	50 uL
Forward Oil Total:	18.6 mL	Reverse Oil Total:	7.85 mL	Volume Oil Total:	26.45 mL
Forward Boards Crossed:	372 Boards	Reverse Boards Crossed:	157 Boards	Total Boards Crossed:	529 Boards

	Start	Stop	Loads	Speed	Crossed	Start	End	Feet	T.Oil
1	2L	2R	4	14	148	0.0	5.9	5.9	7400
2	9L	9R	2	18	46	5.9	11.0	5.1	2300
3	10L	10R	3	18	63	11.0	18.6	7.6	3150
4	11L	11R	3	18	57	18.6	26.2	7.6	2850
5	13L	13R	3	18	45	26.2	33.8	7.6	2250
6	14L	14R	1	22	13	33.8	36.9	3.1	650
7	2L	2R	0	26	0	36.9	40.0	3.1	0

Navigation: Forward Reverse More

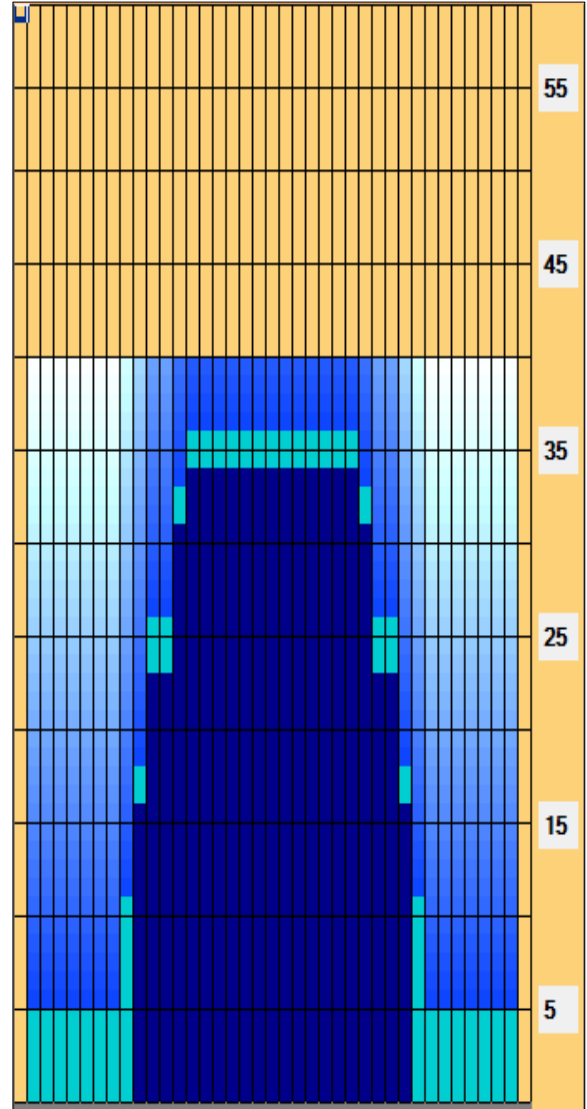
	Start	Stop	Loads	Speed	Crossed	Start	End	Feet	T.Oil
1	2L	2R	0	30	0	40.0	34.0	-6.0	0
2	14L	14R	1	22	13	34.0	30.9	-3.1	650
3	13L	13R	3	18	45	30.9	23.3	-7.6	2250
4	11L	11R	3	18	57	23.3	15.7	-7.6	2850
5	10L	10R	2	14	42	15.7	11.8	-3.9	2100
6	2L	2R	0	10	0	11.8	0.0	-11.8	0

Navigation: Forward Reverse More

Conditioner:
Type In or Select One

TransferType:
Type In or Select One

- Forward
- Reverse
- Combined
- Buff



Item	3L-7L:18L-18R	8L-12L:18L-18R	13L-17L:18L-18R	18L-18R:17R-13R	18L-18R:12R-8R	18L-18R:7R-3R
Description	Outside Track:Middle	Middle Track:Middle	Inside Track:Middle	Middle:Inside Track	Middle:Middle Track	Middle:Outside Track
Track Zone Ratio	6.25	2.27	1.02	1.02	2.27	6.25

