

Big Ben KHSAA



Oil Pattern Distance:	44 Feet	Reverse Brush Drop:	40 Feet	Oil Per Board:	45 uL
Forward Oil Total:	15.435 mL	Reverse Oil Total:	9.54 mL	Volume Oil Total:	24.975 mL
Forward Boards Crossed:	343 Boards	Reverse Boards Crossed:	212 Boards	Total Boards Crossed:	555 Boards

	Start	Stop	Loads	Speed	Crossed	Start	End	Feet	T.Oil
1	2L	2R	3	14	111	0.0	3.9	3.9	4995
2	9L	9R	2	14	46	3.9	7.8	3.9	2070
3	10L	10R	3	18	63	7.8	15.4	7.6	2835
4	11L	11R	3	18	57	15.4	23.0	7.6	2565
5	12L	12R	3	18	51	23.0	30.6	7.6	2295
6	13L	13R	1	18	15	30.6	33.1	2.5	675
7	2L	2R	0	22	0	33.1	39.0	5.9	0
8	2L	2R	0	26	0	39.0	44.0	5.0	0

Conditioner:
Type In or Select
One

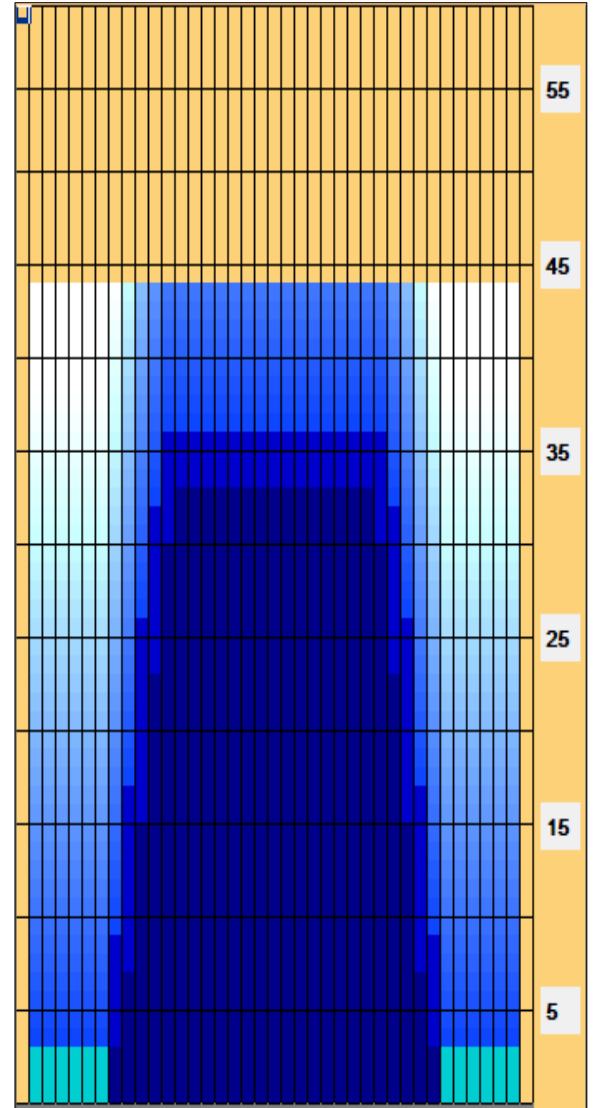
TransferType:
Type In or Select
One

Forward

Reverse

Combined

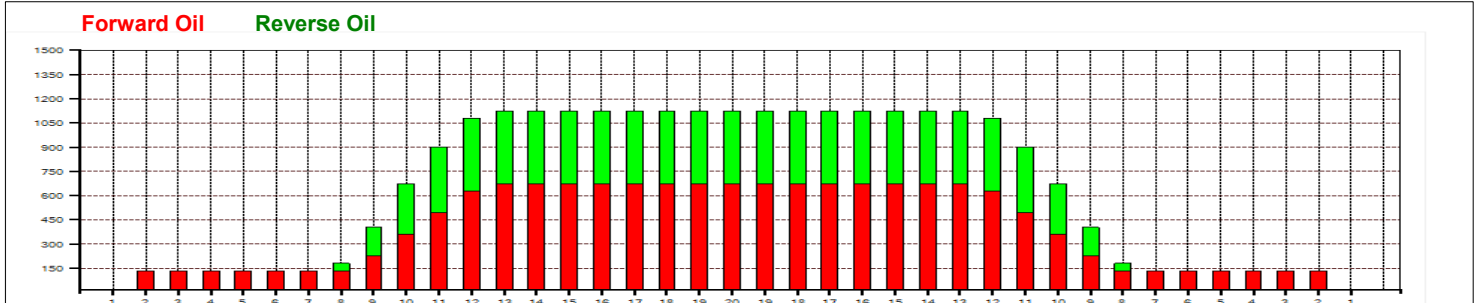
Buff



	Start	Stop	Loads	Speed	Crossed	Start	End	Feet	T.Oil
1	2L	2R	0	30	0	44.0	36.0	-8.0	0
2	12L	12R	1	26	17	36.0	32.4	-3.6	765
3	11L	11R	2	22	38	32.4	26.2	-6.2	1710
4	10L	10R	3	22	63	26.2	16.9	-9.3	2835
5	9L	9R	3	18	69	16.9	9.3	-7.6	3105
6	8L	8R	1	14	25	9.3	7.4	-1.9	1125
7	2L	2R	0	14	0	7.4	0.0	-7.4	0

Tweaked this pattern...F2 changed number of loads from 2 to 1, F5 changed number of loads from 3 to 2. Also, changed drop brush from 44 to 40.

Item	3L-7L:18L-18R	8L-12L:18L-18R	13L-17L:18L-18R	18L-18R:17R-13R	18L-18R:12R-8R	18L-18R:7R-3R
Description	Outside Track:Middle	Middle Track:Middle	Inside Track:Middle	Middle: Inside Track	Middle:Middle Track	Middle:Outside Track
Track Zone Ratio	8.33	1.74	1	1	1.74	8.33





Kegel Challenge Series - BEATEN PATH V2 - 5741



Oil Pattern Distance: **41 Feet**
 Forward Oil Total: **17.55 mL**
 Forward Boards Crossed: **351 Boards**

Reverse Brush Drop: **36 Feet**
 Reverse Oil Total: **8.5 mL**
 Reverse Boards Crossed: **170 Boards**

Oil Per Board: **50 uL**
 Volume Oil Total: **26.05 mL**
 Total Boards Crossed: **521 Boards**

	Start	Stop	Loads	Speed	Crossed	Start	End	Feet	T.Oil
1	2L	2R	3	14	111	0.0	3.9	3.9	5550
2	8L	8R	2	14	50	3.9	7.8	3.9	2500
3	10L	9R	3	14	66	7.8	13.7	5.9	3300
4	12L	10R	3	14	57	13.7	19.6	5.9	2850
5	14L	12R	3	18	45	19.6	27.2	7.6	2250
6	16L	14R	2	18	22	27.2	32.3	5.1	1100
7	2L	2R	0	22	0	32.3	36.0	3.7	0
8	2L	2R	0	26	0	36.0	41.0	5.0	0

	Start	Stop	Loads	Speed	Crossed	Start	End	Feet	T.Oil
1	2L	2R	0	30	0	41.0	30.0	-11.0	0
2	15L	13R	1	22	13	30.0	26.9	-3.1	650
3	13L	12R	2	18	32	26.9	21.8	-5.1	1600
4	11L	11R	2	18	38	21.8	16.7	-5.1	1900
5	9L	9R	1	18	23	16.7	14.2	-2.5	1150
6	7L	7R	1	14	27	14.2	12.3	-1.9	1350
7	2L	2R	1	14	37	12.3	10.4	-1.9	1850
8	2L	2R	0	14	0	10.4	0.0	-10.4	0

Conditioner:
Type In or Select One

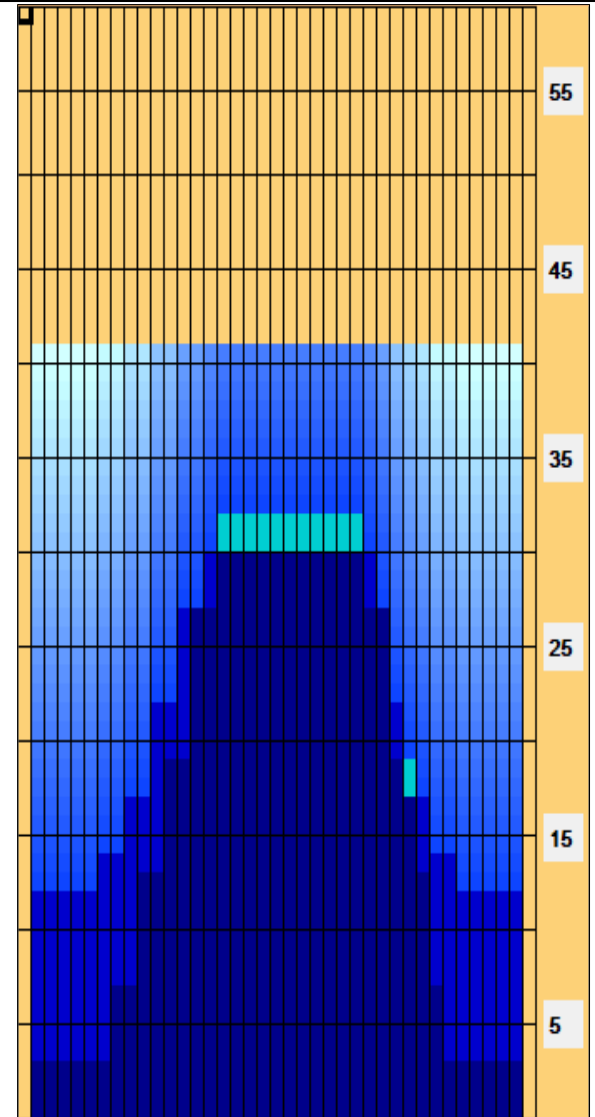
TransferType:
Type In or Select One

Forward

Reverse

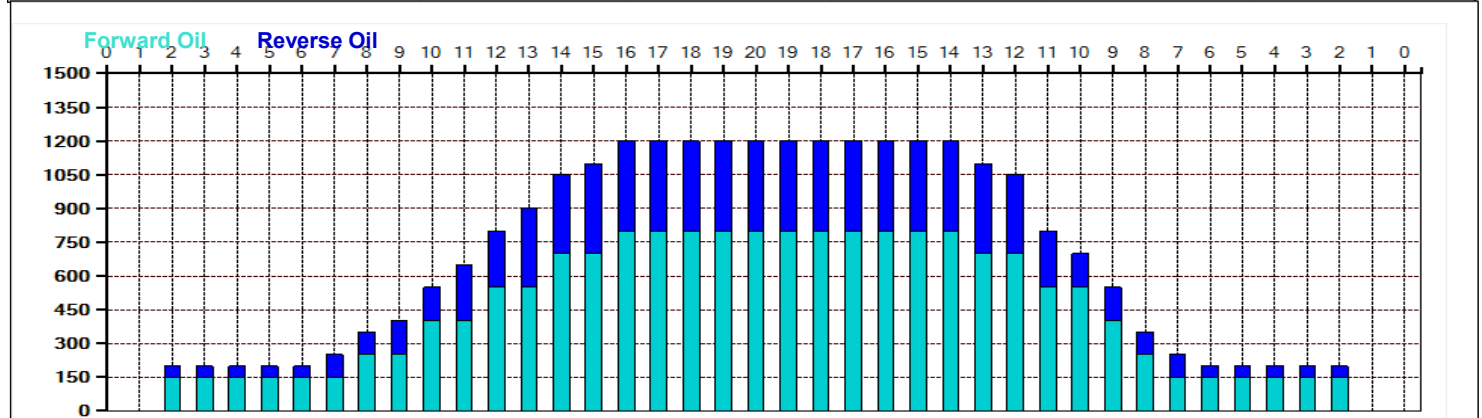
Combined

Buff



<p> BEATEN PATH - 4541 This 41 foot pattern is much like the MIDDLE ROAD but two feet longer. Because of this added length, the options of attack will be a little more limited and the pattern will usually play where the most worn or highest friction part of the lane surface is. The players who excel in reading the lanes will easily find the BEATEN PATH and make this pattern look relatively easy. If you veer too far off the BEATEN PATH, it will play more difficult.</p>

Item	3L-7L:18L-18R	8L-12L:18L-18R	13L-17L:18L-18R	18L-18R:17R-13R	18L-18R:12R-8R	18L-18R:7R-3R
Description	Outside Track:Middle	Middle Track:Middle	Inside Track:Middle	Middle: Inside Track	Middle:Middle Track	Middle:Outside Track
Track Zone Ratio	5.71	2.18	1.1	1.02	1.74	5.71

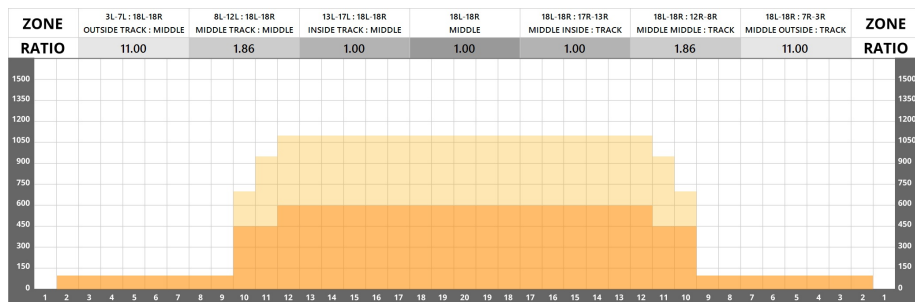




WALL STREET V2



DISTANCE:	40 FEET	VOLUME:	23.6 mL
RATIO:	11.00:1	FORWARD:	13.6 mL
DROP BRUSH:	35 FEET	REVERSE:	10 mL
TANKS:	KEGEL	PUMP:	50 μ L



FORWARD LOADS DATA

#	START	STOP	LOADS	MICS	SPEED	BUFF	TANK	DISTANCE	T.OIL
1	2L	2R	2	50	18	3	A - KEGEL	0 \rightarrow 3	3,700
2	10L	10R	3	50	18	3	A - KEGEL	3 \rightarrow 10	3,150
3	10L	10R	4	50	18	3	A - KEGEL	10 \rightarrow 20	4,200
4	12L	12R	3	50	18	3	A - KEGEL	20 \rightarrow 28	2,550
5	2L	2R	0	50	22	3	A - KEGEL	28 \rightarrow 33	0
6	2L	2R	0	50	30	3	A - KEGEL	33 \rightarrow 40	0

REVERSE LOADS DATA

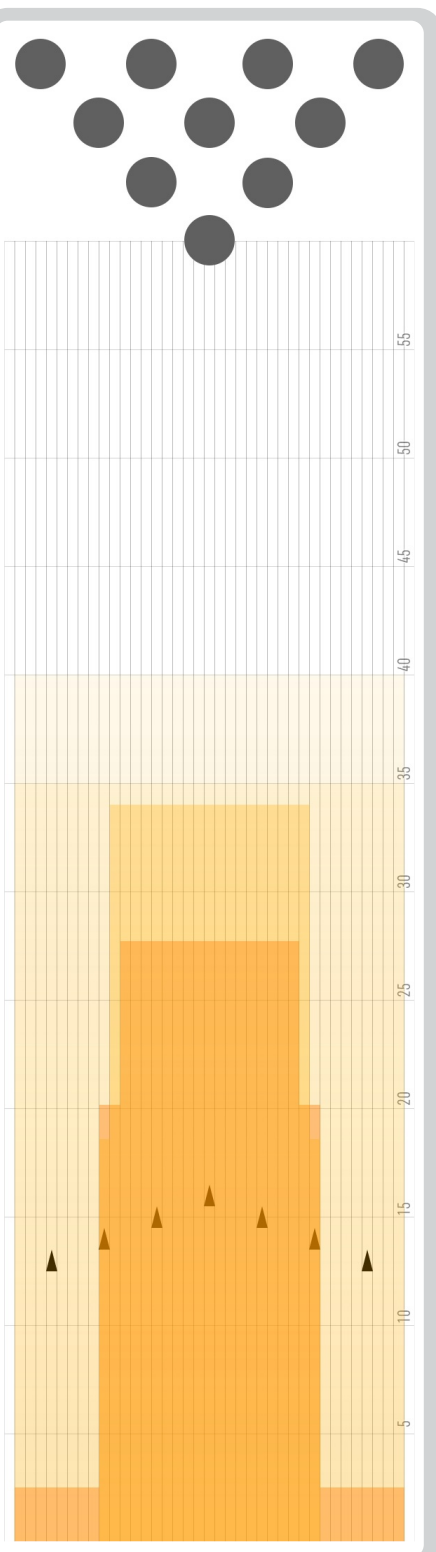
#	START	STOP	LOADS	MICS	SPEED	BUFF	TANK	DISTANCE	T.OIL
1	2L	2R	0	50	30	3	A - KEGEL	35 \rightarrow 34	0
2	11L	11R	5	50	22	3	A - KEGEL	34 \rightarrow 19	4,750
3	10L	10R	5	50	18	3	A - KEGEL	19 \rightarrow 6	5,250
4	2L	2R	0	50	14	3	A - KEGEL	6 \rightarrow 0	0

THIS PATTERN IS DESIGNED FOR:

REVERSE DROP BRUSH

This pattern may require adjustments if using a lane machine that does not have these features

Created Jul 08, 2023



SCAN QR CODE TO
SHARE AND
DOWNLOAD
THIS PATTERN



KEGEL PATTERN LIBRARY APP



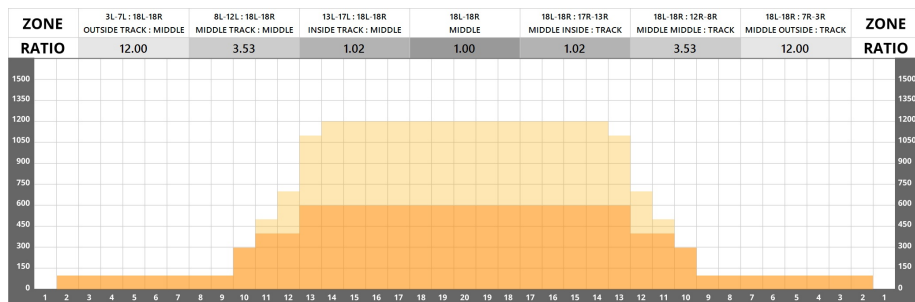
PATTERNLIBRARY.KEGEL.NET



EASY STREET V2



DISTANCE:	39 FEET	VOLUME:	22.4 mL
RATIO:	12.00:1	FORWARD:	12.8 mL
DROP BRUSH:	34 FEET	REVERSE:	9.6 mL
TANKS:	KEGEL	PUMP:	50 μ L



FORWARD LOADS DATA

#	START	STOP	LOADS	MICS	SPEED	BUFF	TANK	DISTANCE	T.OIL
1	2L	2R	2	50	18	3	A - KEGEL	0 \rightarrow 3	3,700
2	10L	10R	4	50	18	3	A - KEGEL	3 \rightarrow 13	4,200
3	11L	11R	2	50	18	3	A - KEGEL	13 \rightarrow 18	1,900
4	13L	13R	4	50	18	3	A - KEGEL	18 \rightarrow 28	3,000
5	2L	2R	0	50	22	3	A - KEGEL	28 \rightarrow 33	0
6	2L	2R	0	50	30	3	A - KEGEL	33 \rightarrow 39	0

REVERSE LOADS DATA

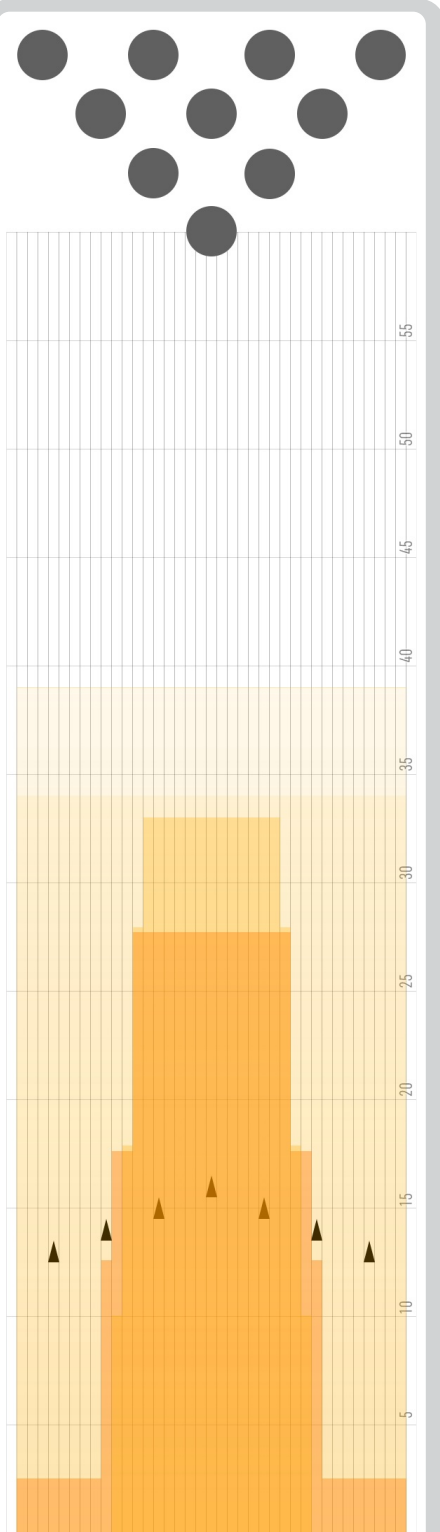
#	START	STOP	LOADS	MICS	SPEED	BUFF	TANK	DISTANCE	T.OIL
1	2L	2R	0	50	30	3	A - KEGEL	34 \rightarrow 33	0
2	14L	14R	2	50	18	3	A - KEGEL	33 \rightarrow 28	1,300
3	13L	13R	4	50	18	3	A - KEGEL	28 \rightarrow 18	3,000
4	12L	12R	4	50	14	3	A - KEGEL	18 \rightarrow 10	3,400
5	11L	11R	2	50	14	3	A - KEGEL	10 \rightarrow 6	1,900
6	2L	2R	0	50	14	3	A - KEGEL	6 \rightarrow 0	0

THIS PATTERN IS DESIGNED FOR:

REVERSE DROP BRUSH

This pattern may require adjustments if using a lane machine that does not have these features

Created Jul 08, 2023



SCAN QR CODE TO
SHARE AND
DOWNLOAD
THIS PATTERN



KEGEL PATTERN LIBRARY APP



PATTERNLIBRARY.KEGEL.NET